



Roman Road, London, E3

BUTLER & STAG



Excellent two bedroom apartment set within this purpose-built, boutique modern development on the Historic Roman Road (One of the oldest trading markets in London), which boasts a market on Tuesday, Thursday and Saturday and hosts some excellent cafe's, coffee shops and restaurants..

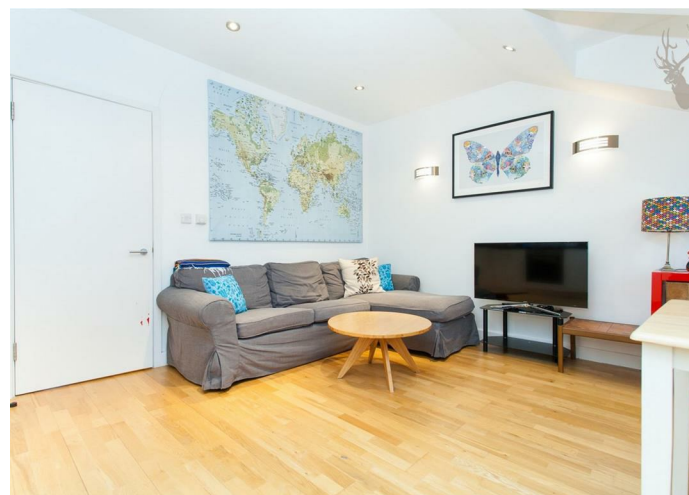


- Two Bedroom Apartment
- Excellent Location
- Historic Roman Road Market
- Close To Transport
- Top Floor
- Victoria Park Nearby
- Fully Furnished
- Located Near To Victoria Park

Excellent two bedroom apartment set within this purpose-built, boutique modern development on the Historic Roman Road (One of the oldest trading markets in London), which boasts a market on Tuesday, Thursday and Saturday and hosts some excellent cafe's, coffee shops and restaurants..

The property consists of two double bedrooms, fitted bathroom, and a light and spacious living area with a fully fitted kitchen.

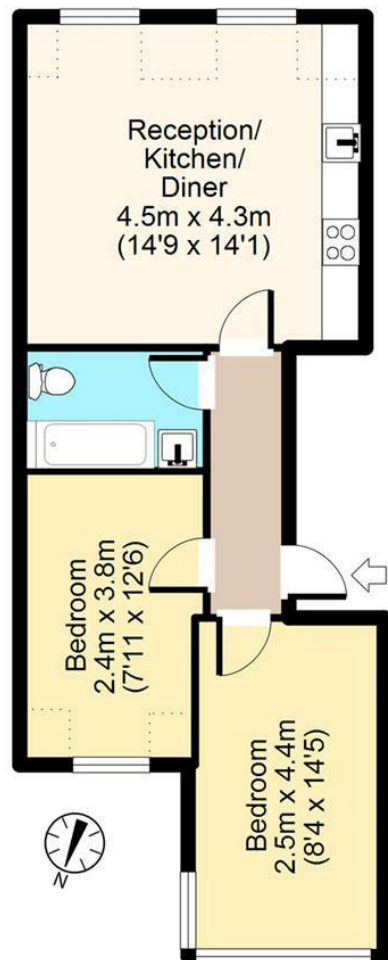
Located close to all local transport links with Mile End Underground Station within 0.8 miles.





Roman Road, E3

Second Floor



Total area: approx. 47 sq. metres (506 sq. feet)

For illustration purposes only - not to scale

www.londonpropertyassessments.co.uk

IMPORTANT NOTICE - These particulars have been prepared in good faith and they are not intended to constitute part of an offer or contract. We have not performed a structural survey on this property and the services, appliances and specific fittings have not been tested. All photographs, measurements, floor plans and distances referred to are given as a guide and should not be relied upon.

BUTLER & STAG

☎ 020 8102 1236

🏠 508 Roman Road, Bow, London, E3 5LU

✉ bow@butlerandstag.com

www.butlerandstag.uk